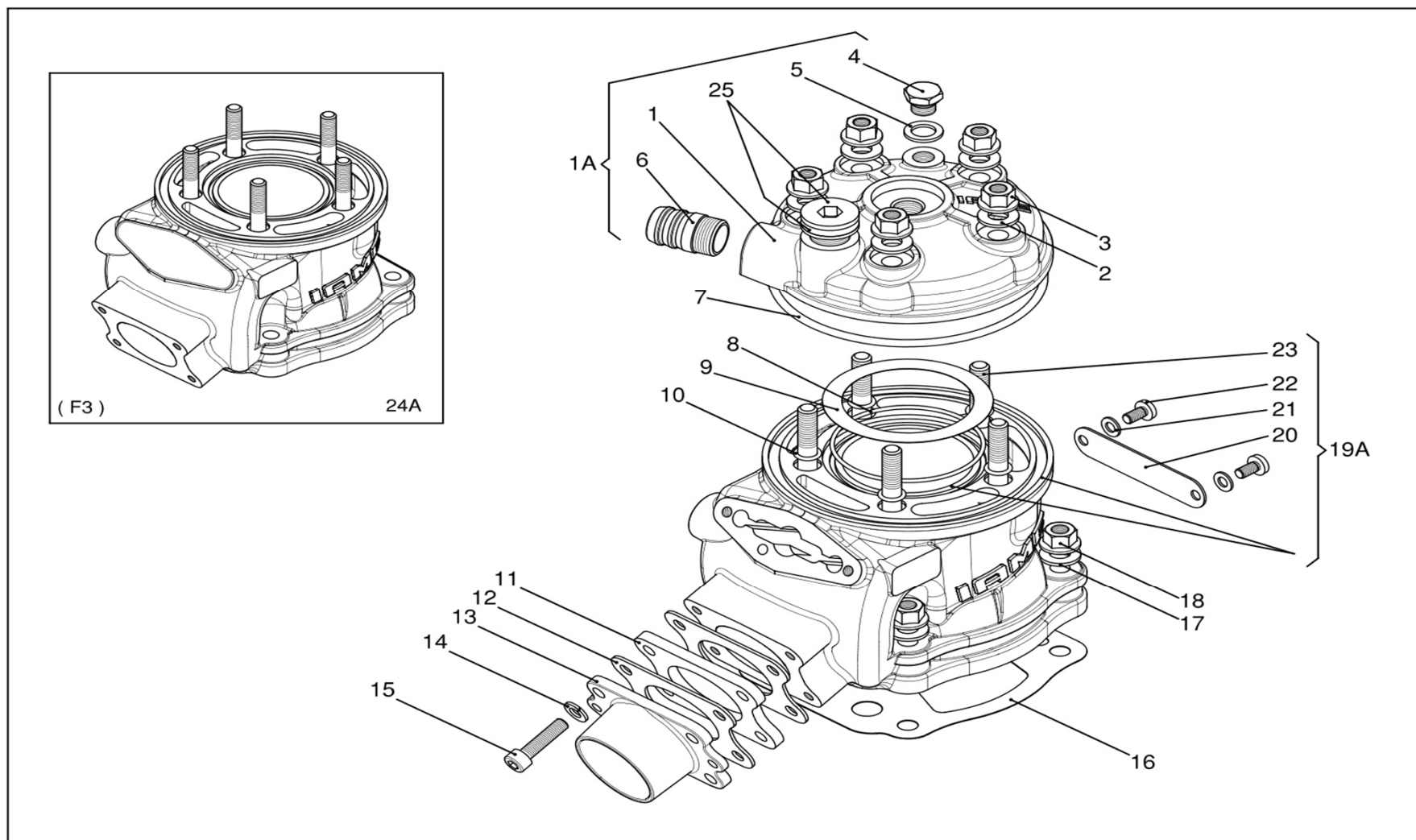
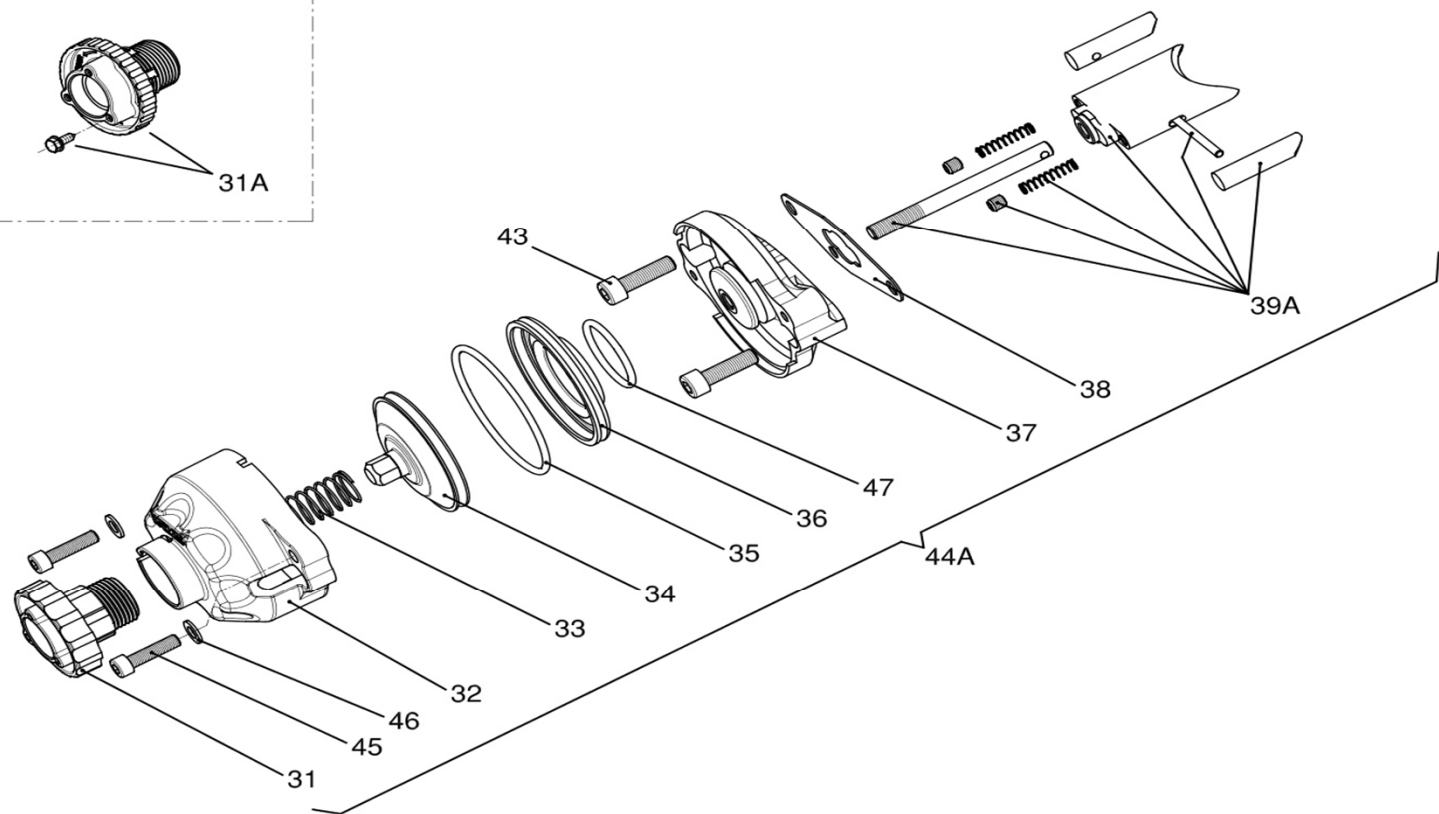
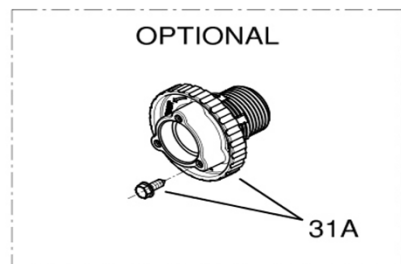




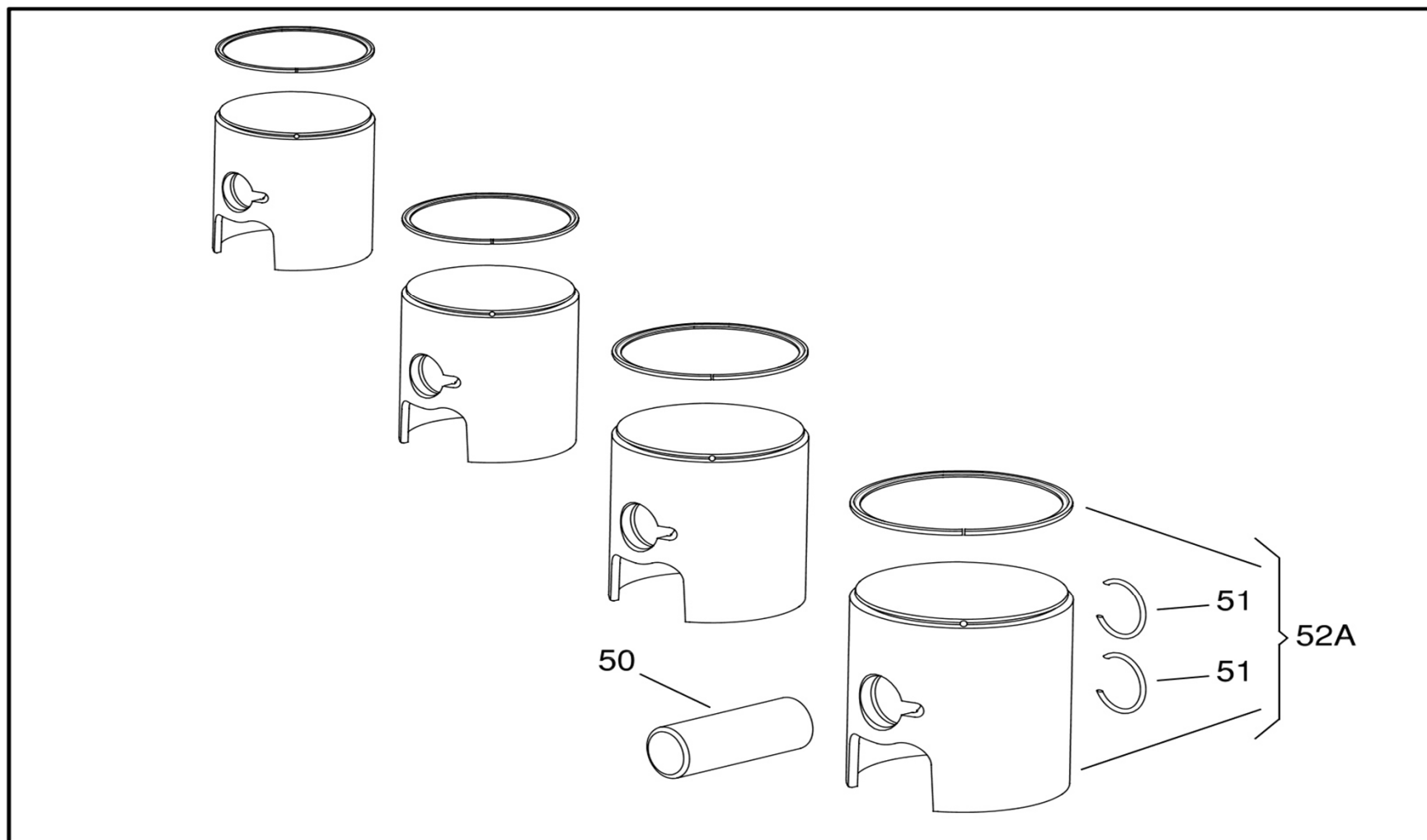
TESTA E CILINDRO



GRUPPO VALVOLA

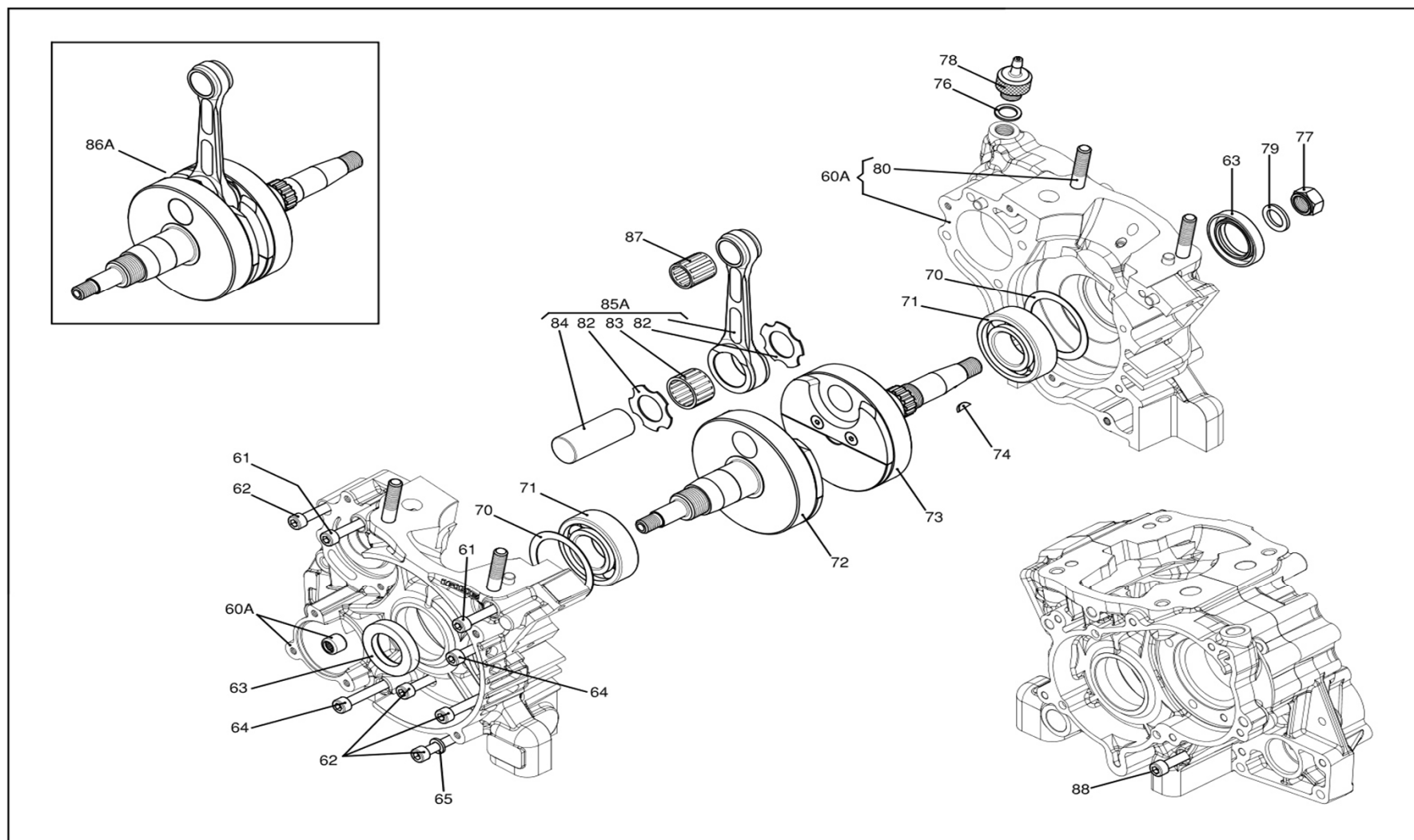


PISTONE

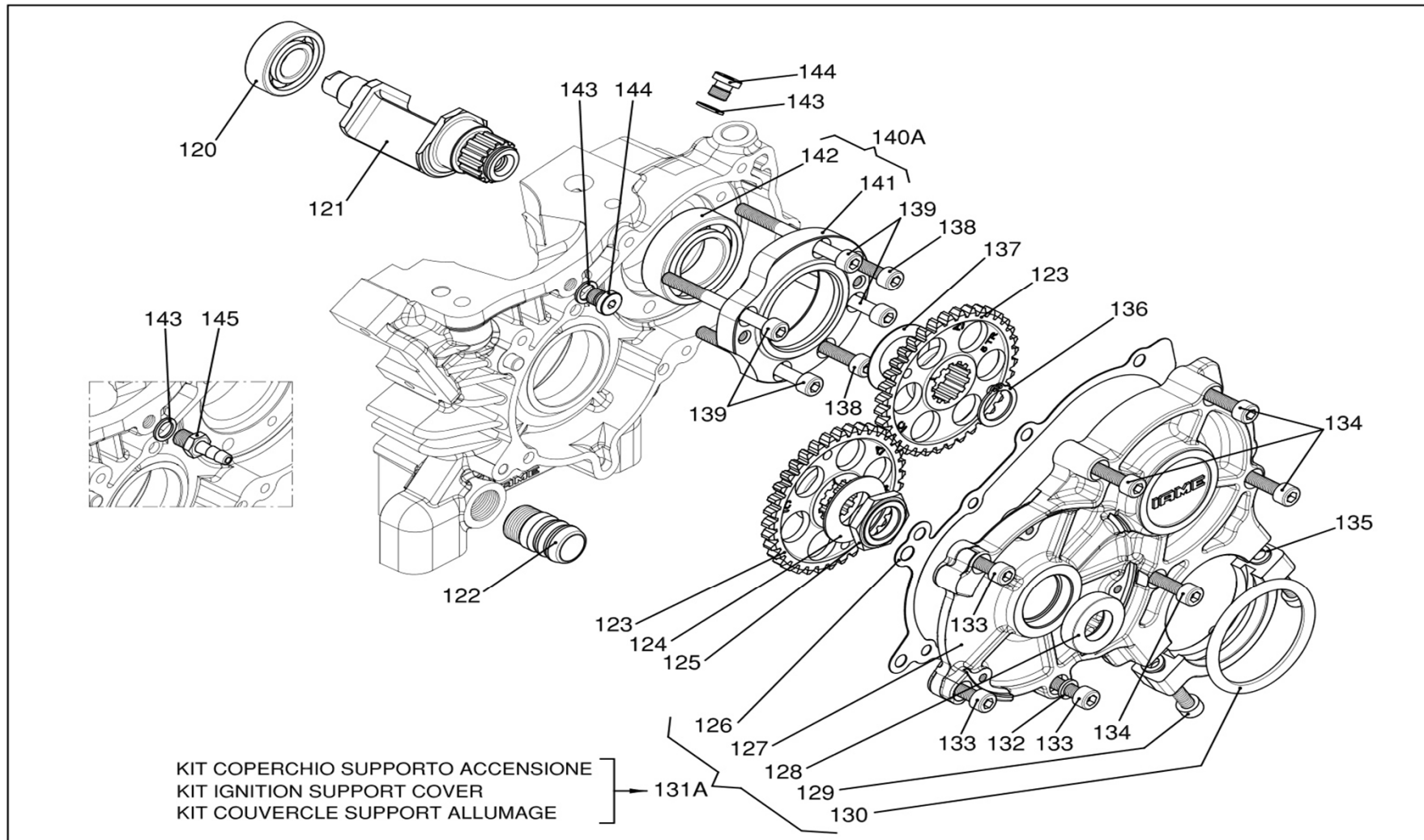


CAT-259

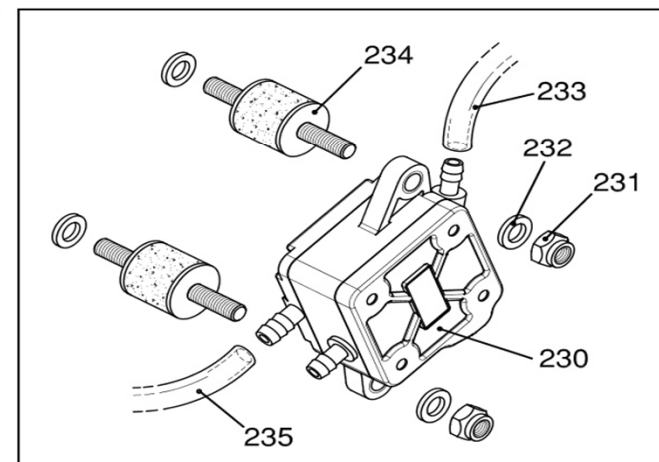
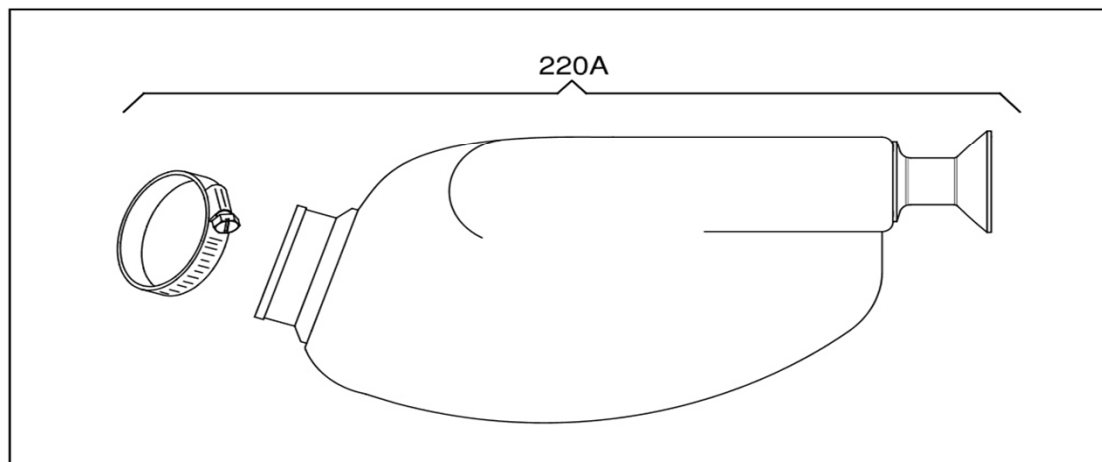
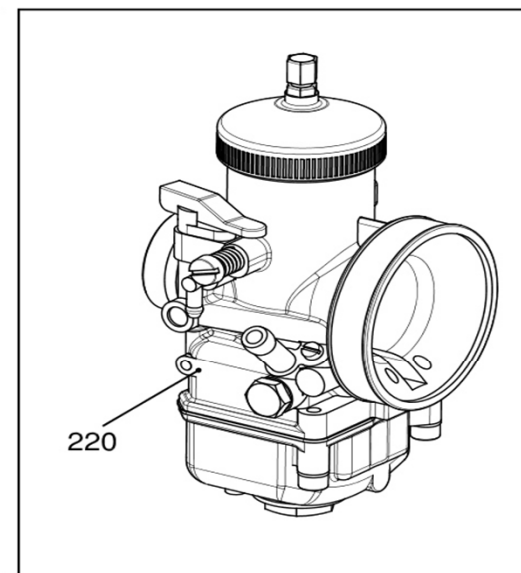
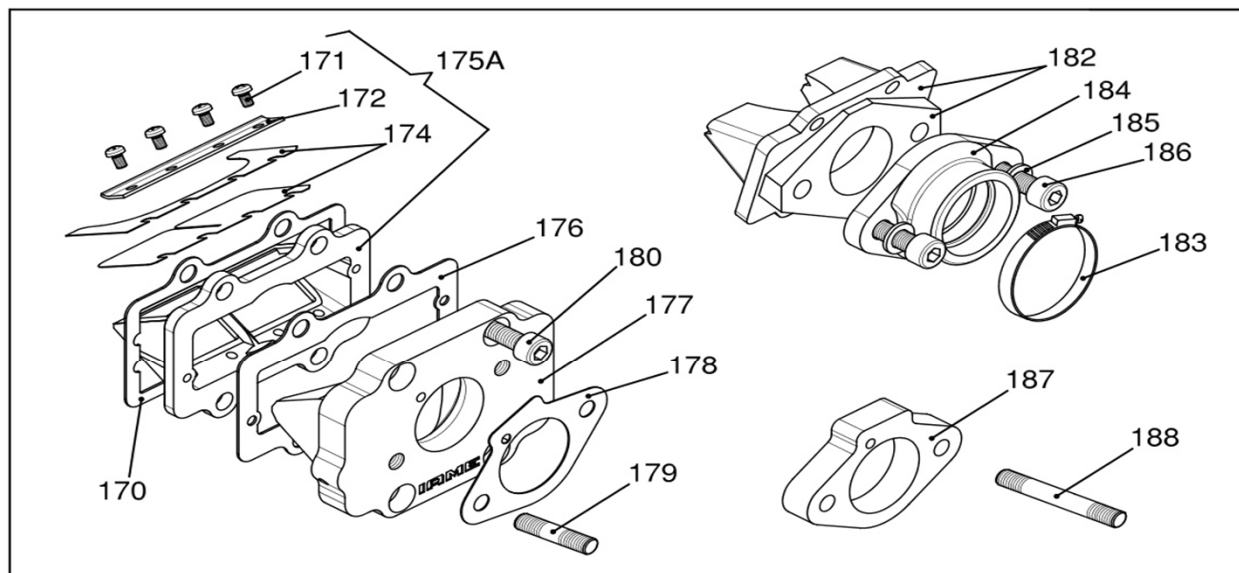
BASAMENTO E ALBERO MOTORE



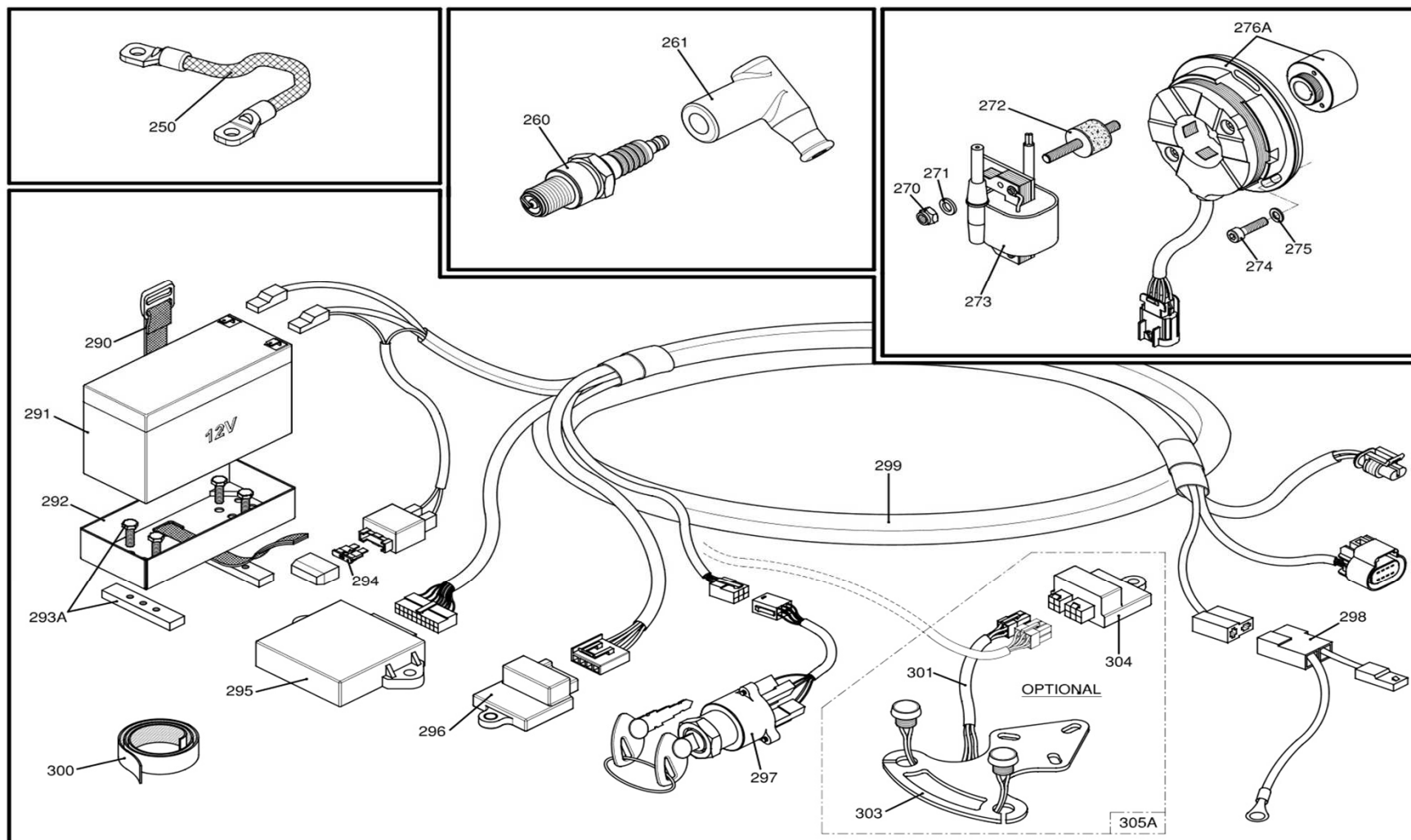
ALBERO DI EQUILIBRAMENTO



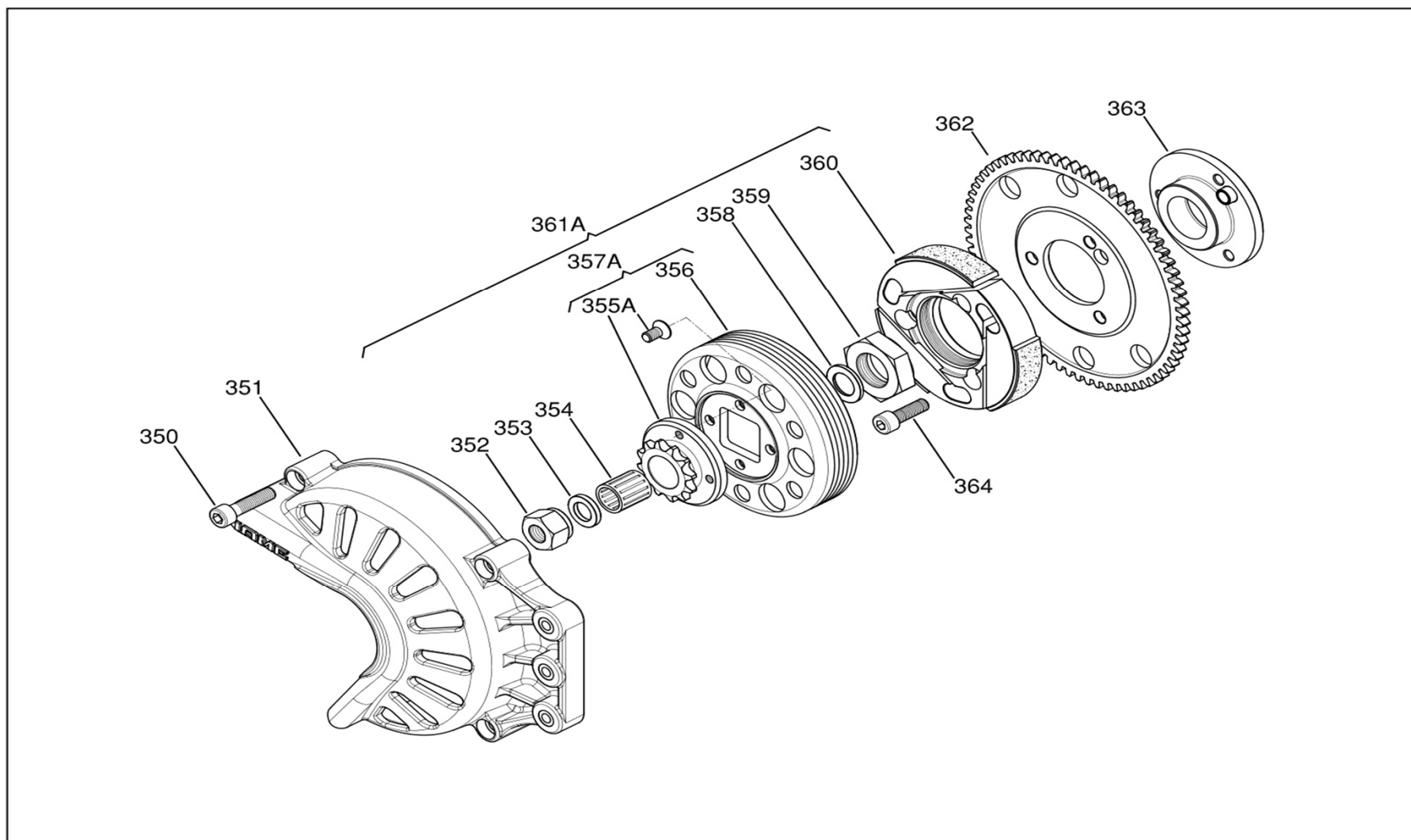
AMMISSIONE



ACCENSIONE ELETTRICA

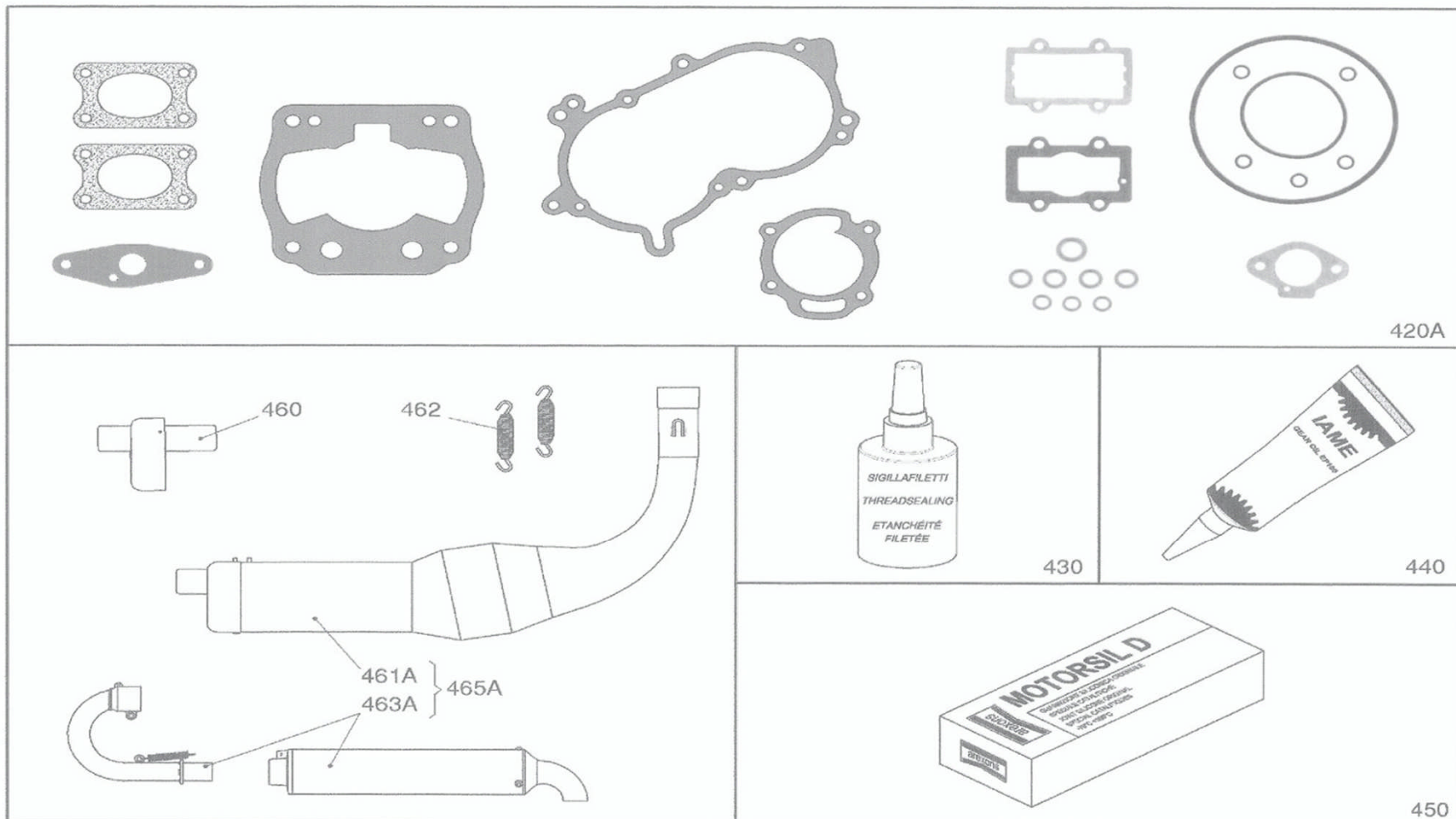


GRUPPO FRIZIONE

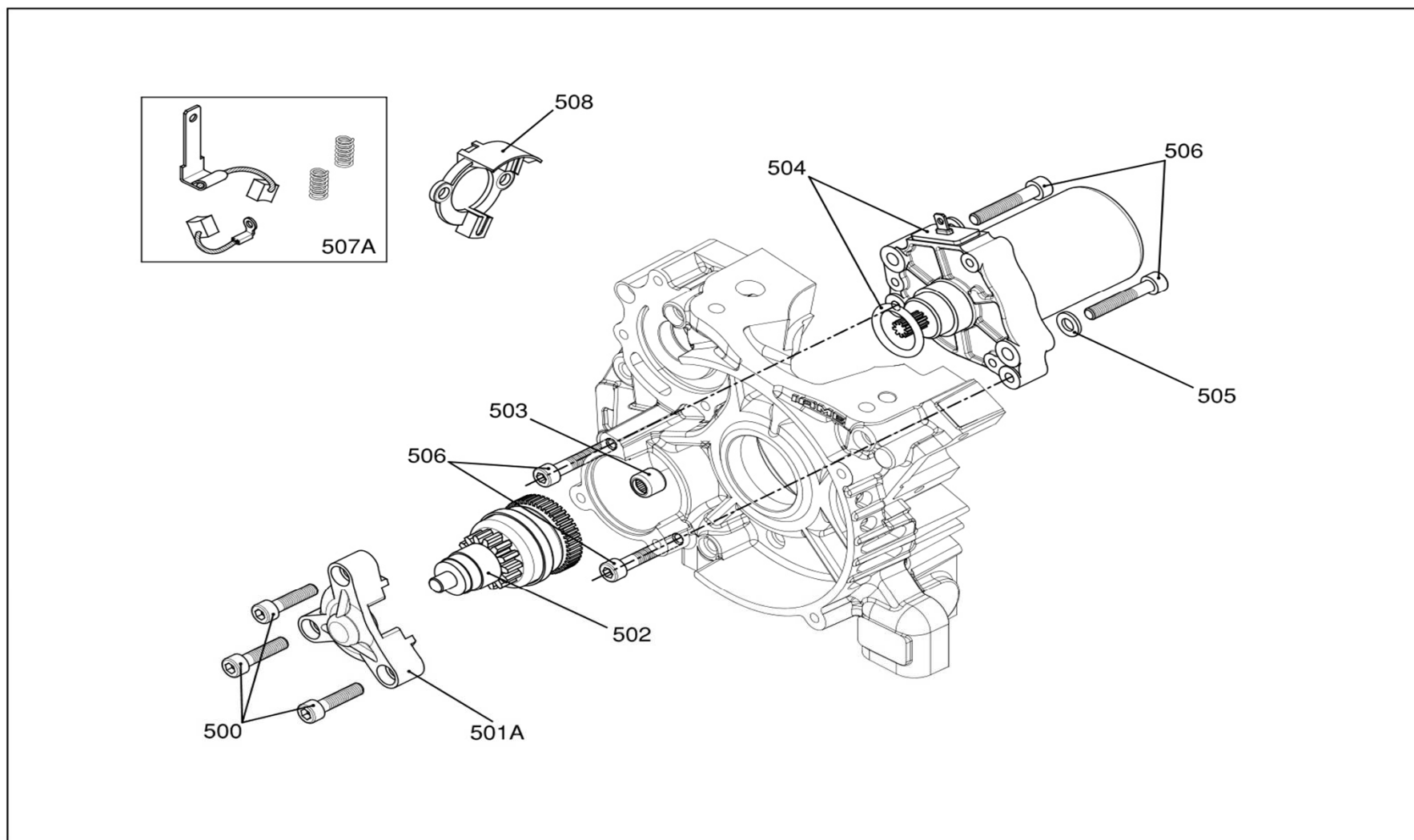


GRUPPO SCARICO & SERIE GUARNIZIONI

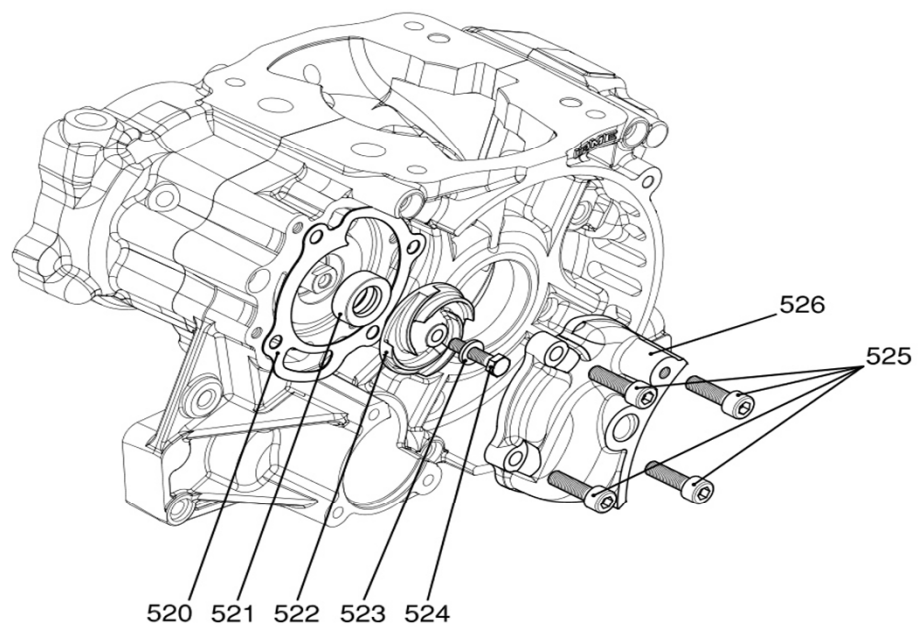
SISTEMA SCARICO E SERIE GUARNIZIONI / EXHAUST SYSTEM & GASKETS SET SYSTEME ECHAPPEMENT ET SERIE JOINTS.



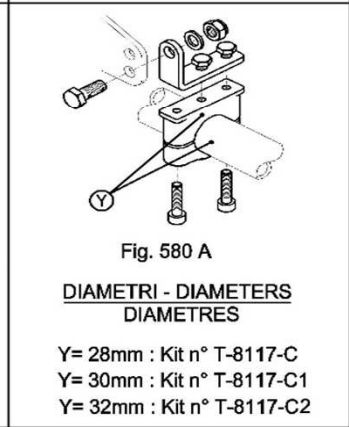
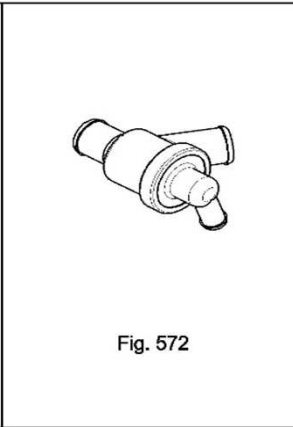
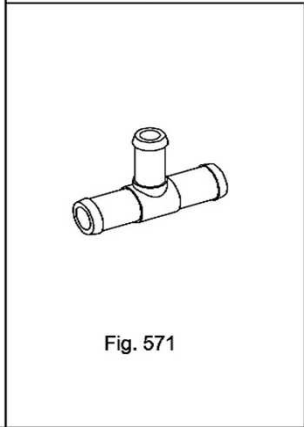
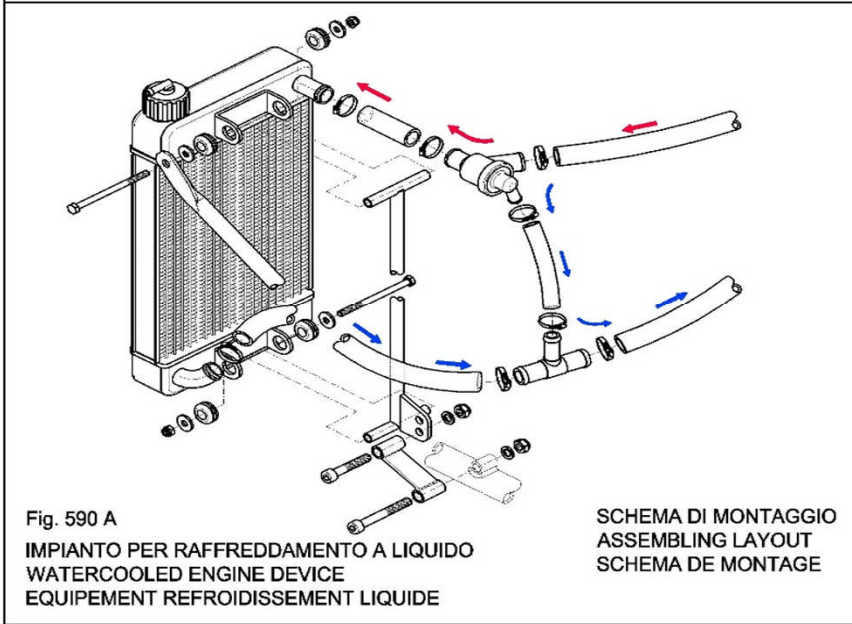
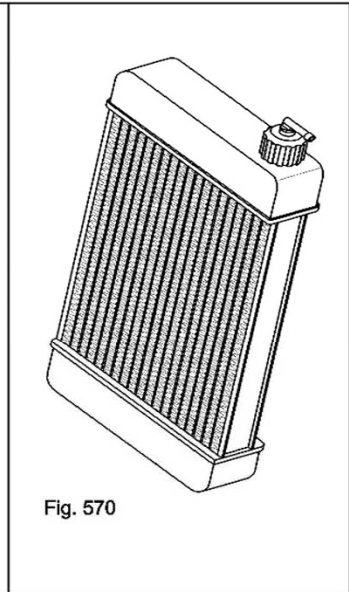
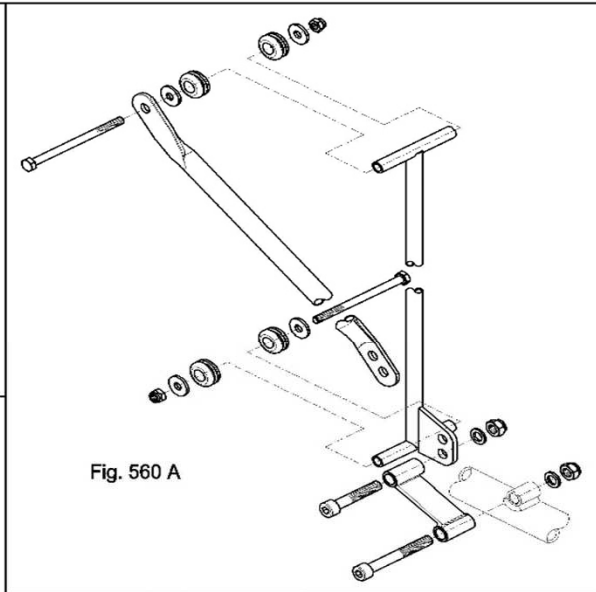
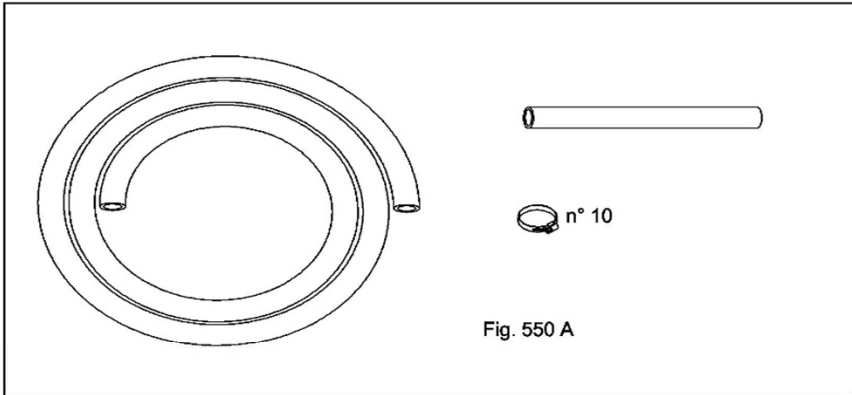
AVVIAMENTO ELETTRICO



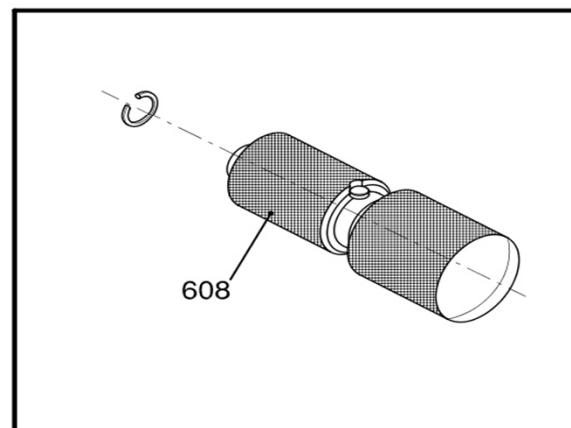
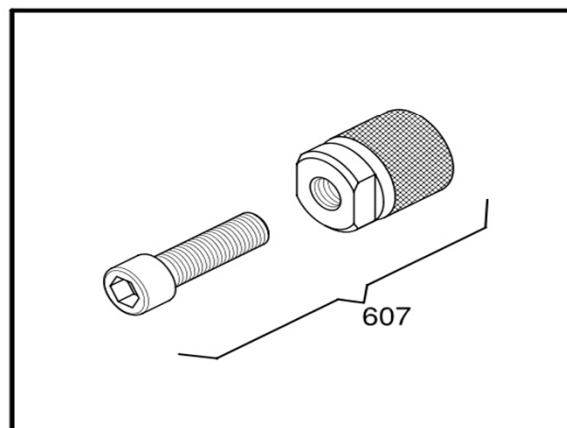
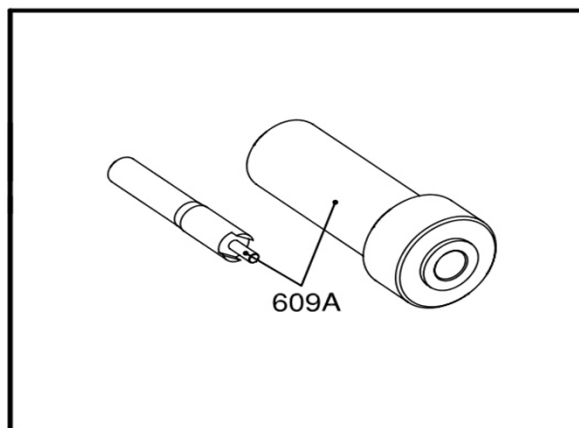
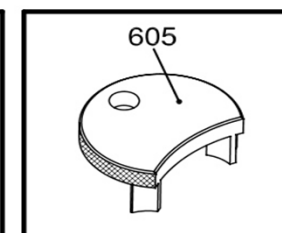
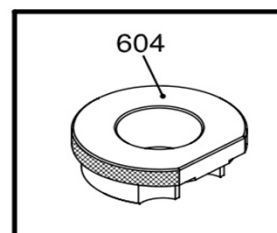
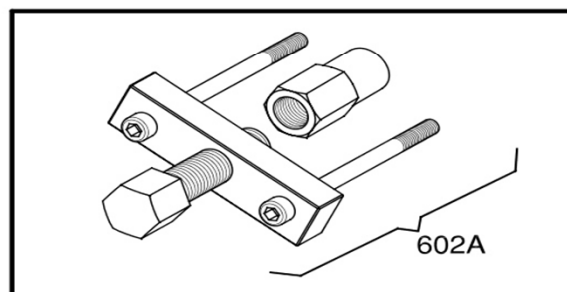
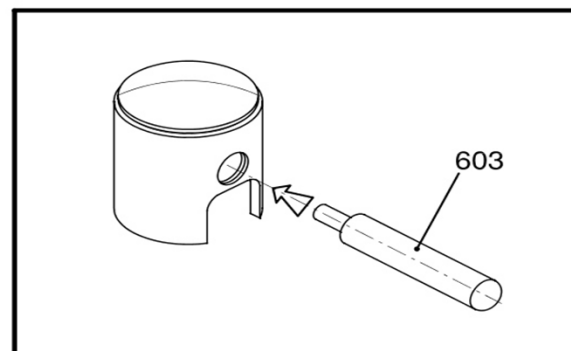
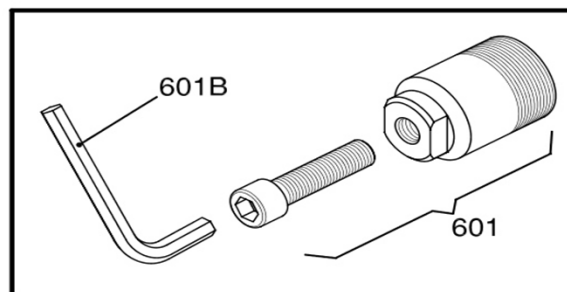
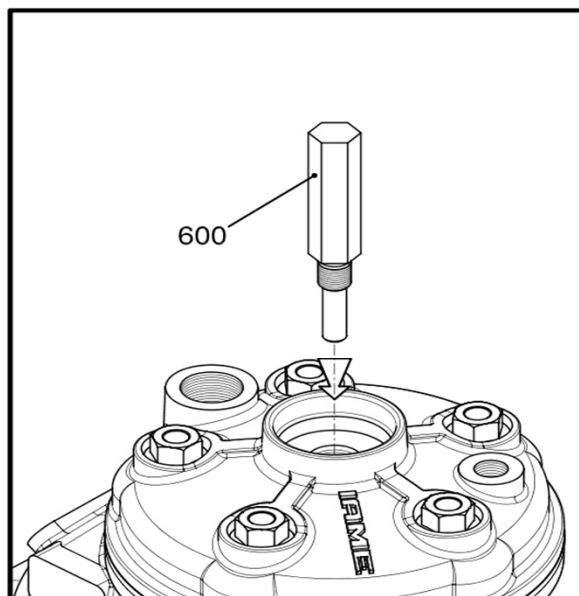
GRUPPO POMPA



SISTEMA RAFFREDDAMENTO LIQUIDO

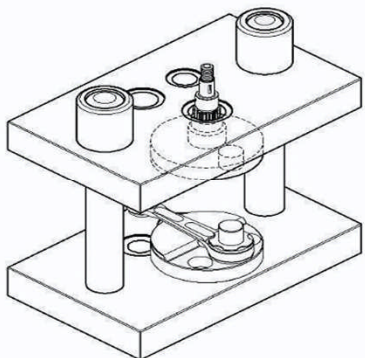


ESTRATTORI & ATTREZZI

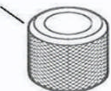


650

ATTREZZO MONTAGGIO ALBERO
ASSEMBLY CRANKSHAFT TOOL
OUTIL MONTAGE VILEBREQUIN

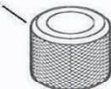


651



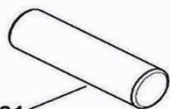
X30 125cc
REEDSTER

652



661

60cc - 80cc -
85cc - 100cc -
113cc - 120cc -
125cc - X30 125cc
REEDSTER



662
60cc - 80cc -
85cc - 100cc -
113cc - 120cc -



663
125cc
X30 125cc
REEDSTER



664
60cc - 80cc -
85cc - 100cc -
113cc - 120cc -
125cc - X30 125cc



665
K71 / HPV100



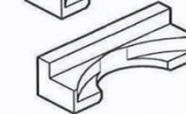
666
60cc MINI / BABY SWIFT
80cc - 85cc
PV100 SWIFT



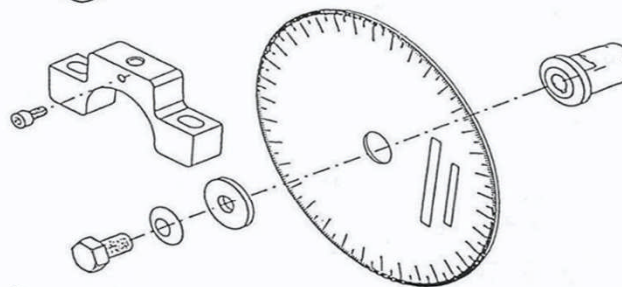
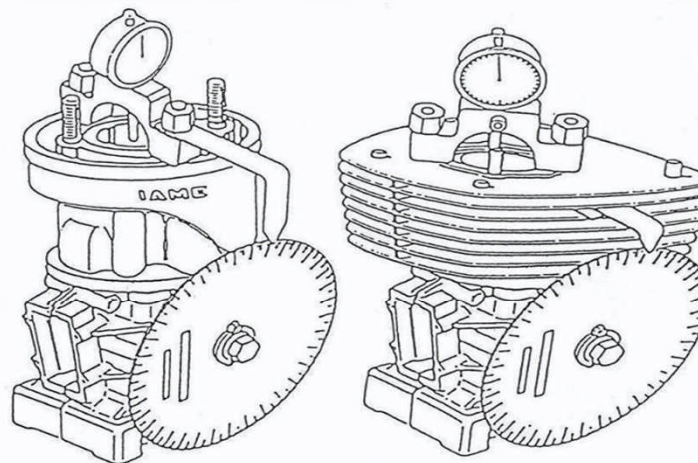
667
100cc - 113cc -
120cc



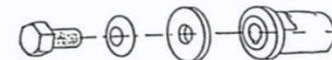
668
125cc -
X30 125cc
REEDSTER



669
60cc



690A



691A